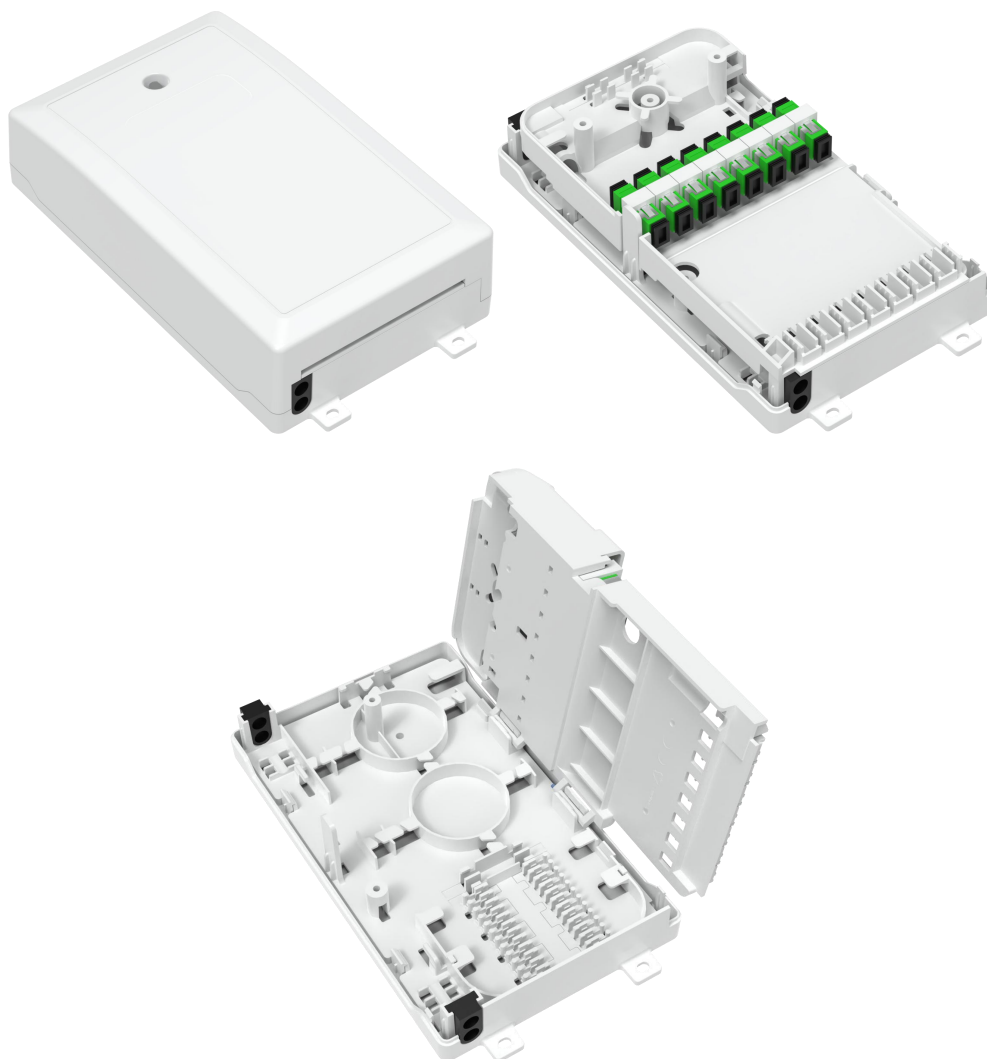

FSP-P-08B3 Fiber Distribution Box



1、 Description

FSP-P-08B3 Fiber Distribution Box is the product used in FTTH network for different scene requirements of one lever split. The function of fiber splicing, termination, storage and scheduling can be provided. Splitter can be installed in the box. The box is the important device in fiber access network.

2、 Specification

- (1) Beautiful and compact model, convenient installation;
 - (2) Nontoxic for all the material;
 - (3) Non-corrosive for metal component;
 - (4) While activating user operation, insert the field assembly connector into the adaptor;
 - (5) Suitable for wall-mounted installation;
 - (6) Neat fiber routing management;
-
-

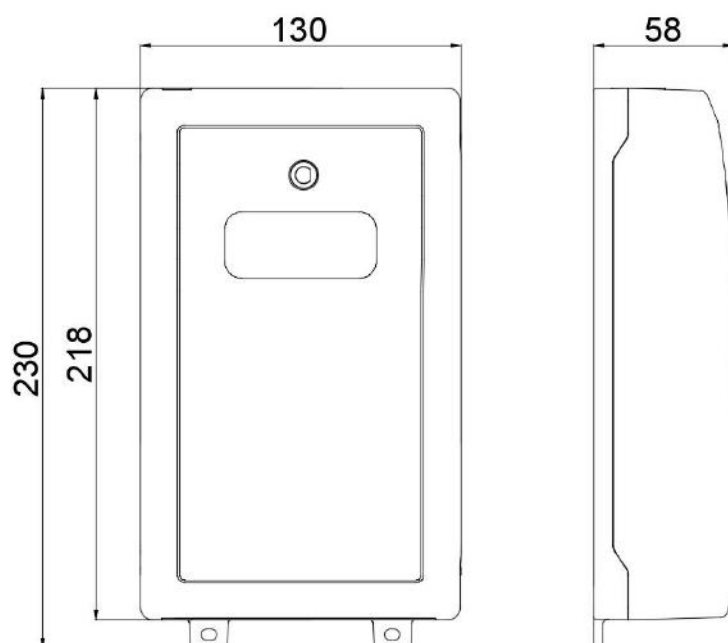
3、 Applications

- 1) FTTH access network
- 2) Telecommunication network
- 3) CATV networks
- 4) Data communications network
- 5) Local area networks

4、 Configuration Table

Model	FSP-P-08B3
Installation Method	Wall-mounted
Color	Gray
Material	PC+ABS
Cable Ports	2 Ports (For main cable) + 8 Ports (For drop cable)
Capacity Of Splice Tray	1 Pc (24 Cores / Tray)
Adapter Ports (SC)	8 Pcs
Distribution cable Diameter	∅ 8~10mm
Size: H×W×D (mm) (Pic 1)	230×130×58

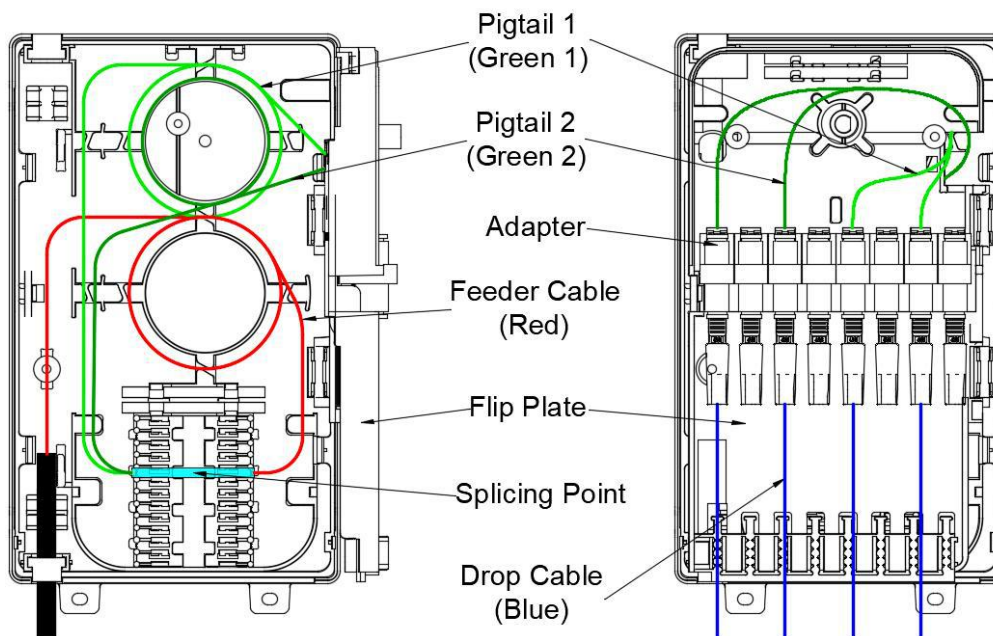
Table 1 Model and configuration



Pic 1

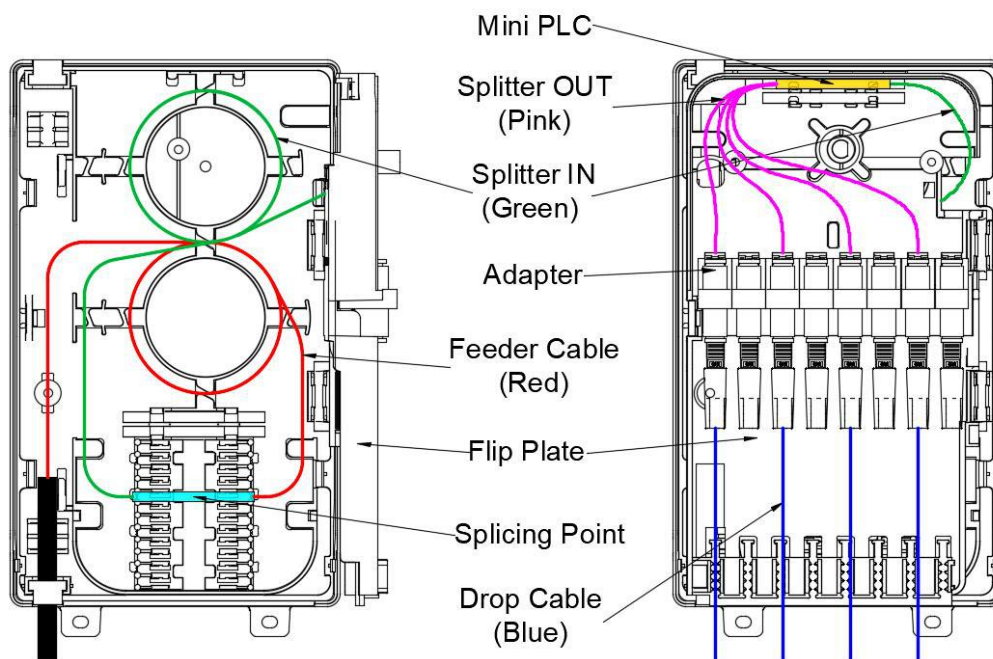
5. Routing (Pic 2, Pic 3)

Distribution Type



Pic 2

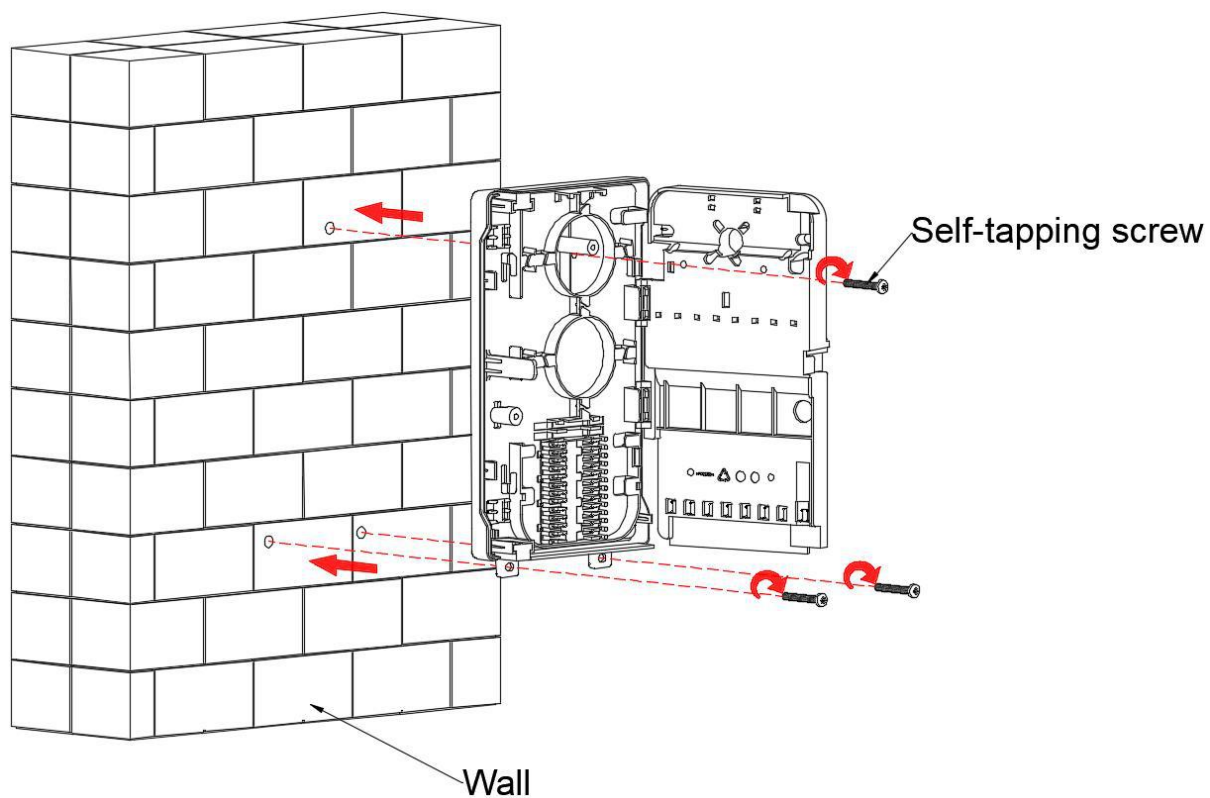
PLC Type



Pic 3

6、 Installation

Drill 3 holes into the wall based on the size, place the expansion bolt, place the box to match up the holes and use bolt to fasten. (Pic 4) .



Pic 4