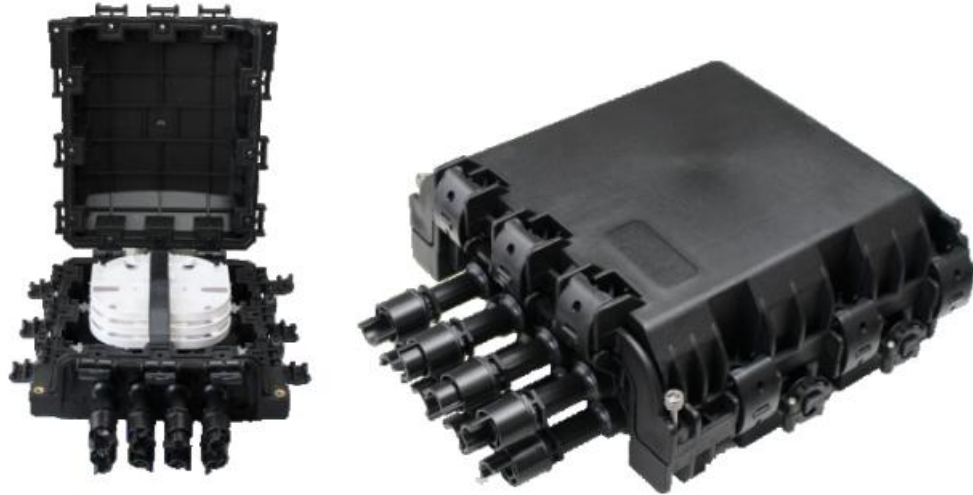


# FATD-0408B Fiber Optic Splice Closure



FATD-0408B fiber optic splice closures are specially designed to protect joints of optic cable. Excessive fibers can be stored in storage baskets behind the splice trays. The optical fibers are fusion on sides of the tray. One tray can splice 24 fibers; Available for 3 trays to splice total 72 fibers. Adopt modified PP material, with anti-UV, anti-aging and corrosion resistance material. Good quality and long service life. It is reusable.

Material	Trays	Tray capacity	Total Capacity	Dimension	Built-in Adapter
COVER&BASE:PP+GF TRAY: ABS	3	12F	36F	A*B*C(mm) 248*276*124.5	8 pcs SC/UPC or SC/APC
<b>Sealing method</b>			Mechanical and heat-shrinkable seals		

## Application :

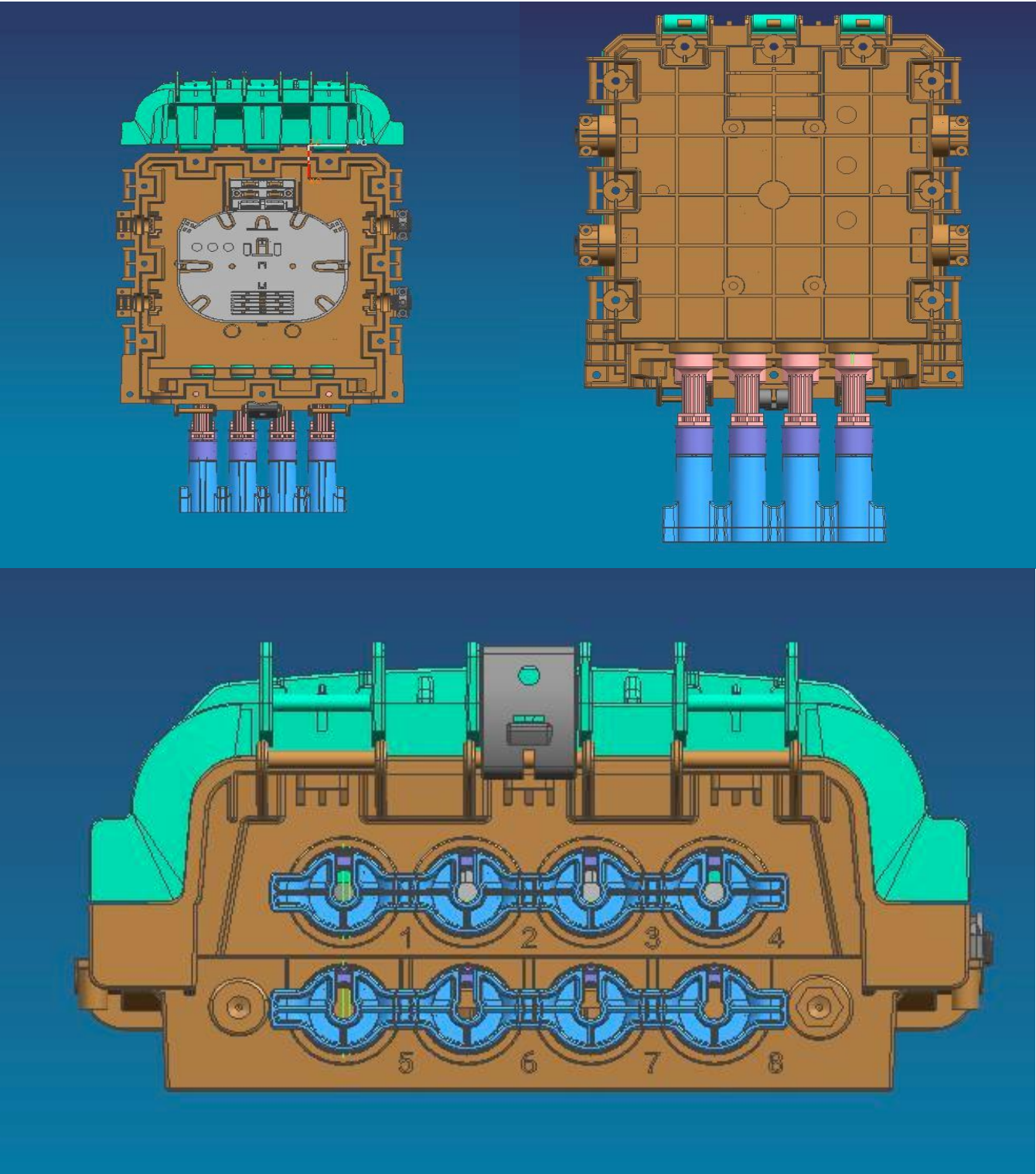
It can be installed in aerial locations, ducted applications, direct buried, manholes. Small volume but large capacity.

## Features:

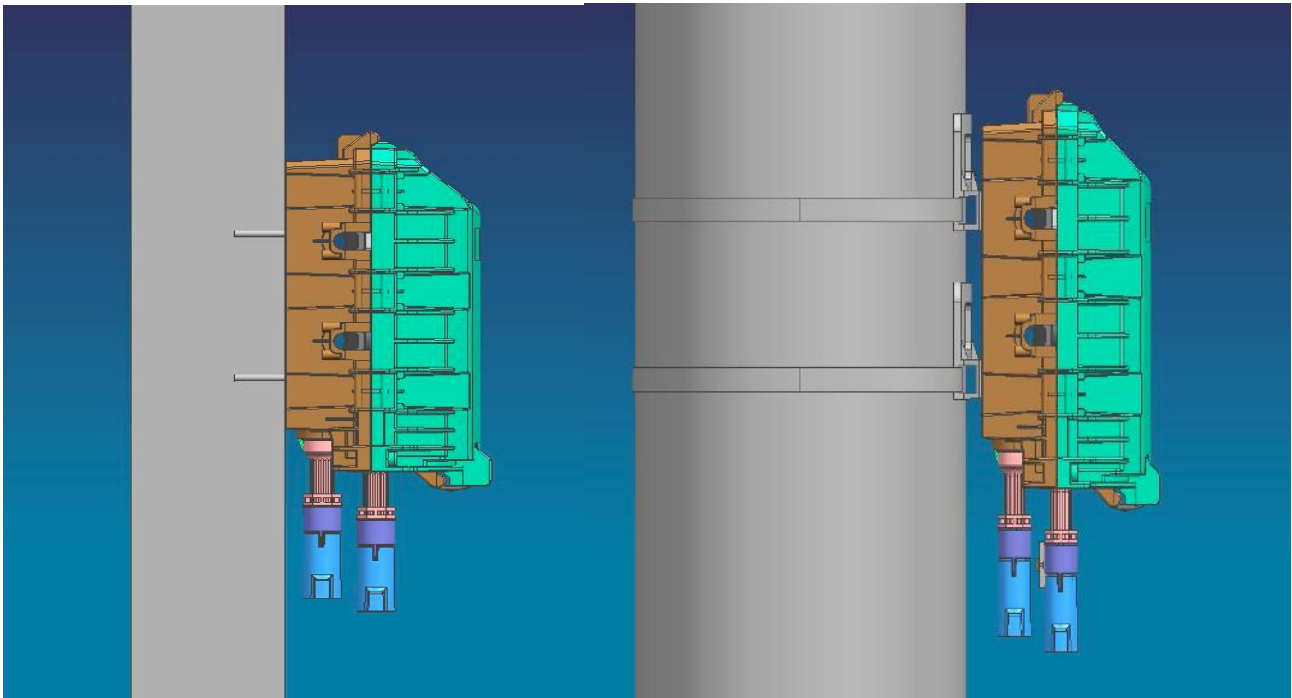
1. Excessive fibers can be stored in storage baskets. Easy in fiber management.
2. Fully mechanical sealing. Easy installation and reentry. No other sealing adhesive tape is needed.
3. Base and dome sealed with clamp and O-ring system. Cable entry ports sealed with rubber.



# Install Method



- 1. Wall-mounted installation  
Drill 3 holes into the wall based on the size in table 1, place the expansion bolt, place the box to match up the holes and use bolt to fasten. (Pic 1)
- 2. Pole-mounted installation  
Fix 1 set of the pole ring to the telecom pole (Pic 2)



**Pic 1 Wall mounted installation**

**Pic 2 Pole mounted installation**

## **8. Accessories:**

1. Pole Ring\*1 (Option)